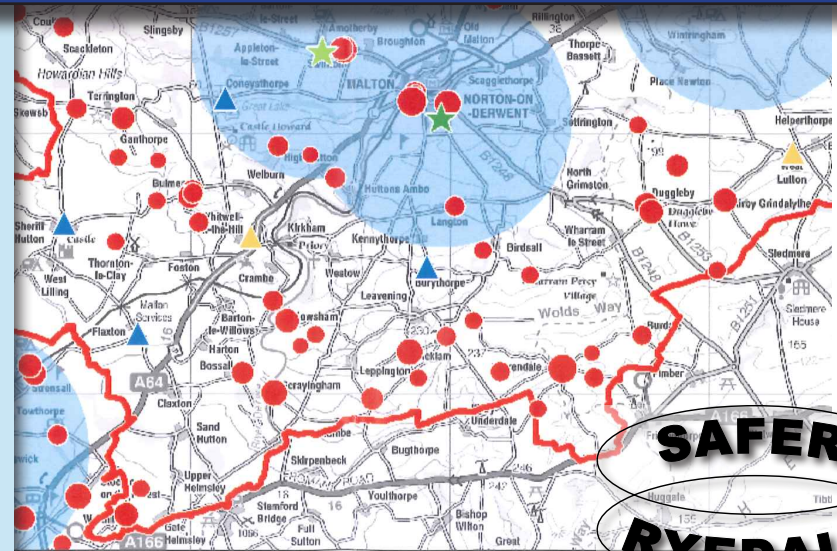


Partnership Plan 2013 - 2014

www.ryesafe.org



'working towards a Safer Ryedale'



Contents

Ryedale District	4
What is the Partnership Plan?	5
How does the Safer Ryedale Partnership work?	6
Review of 2012/13	8
Our Priorities for 2013/14	13
Safer Ryedale Action Plan	15
Funding and Resources	16
Community engagement	17
The future	18
Aims and Objectives for 2013/14	19
Glossary	24
Acknowledgements	25
Contact details	26

Foreword

Inspector Andy Everitt, Chair of Safer Ryedale Delivery Team

The Safer Ryedale Partnership was formed in 1998 and since then has successfully undertaken many projects to make Ryedale a safer place in which to live, work and visit. Partnership staff, Ryedale Police, partner organisations and volunteers continue to work effectively together within our community to tackle areas of public concern. These range from quality of life issues including anti-social behaviour through to criminality in all its forms. Criminals travelling into Ryedale to commit offences remains a key challenge for us, however the focussed work of the partnership has ensured that crime and anti-social behaviour continues to fall within the district. The levels of crime in Ryedale makes it one of the top safest districts in England and Wales.

The last three years have seen many changes in the national policy environment around community safety. County level structures have changed in line with the reduced reporting requirements and most crucially for Safer Ryedale, its funding has reduced by half and will reduce further. The strength of the Safer Ryedale Partnership is in its ability to deliver an 'on the ground' service and is a good example of what can be achieved with limited funding.

The Partnership continues to look for ways to provide an excellent service with diminishing resources. The Safer Ryedale Board was combined with the Ryedale Strategic Partnership Board in 2010 and two out of our four Priorities – Safer Roads and Domestic Abuse – are now managed jointly by Scarborough & Ryedale Delivery groups who have responsibility to deliver targeted actions.

A potential major change in the way we deliver policing services has been the introduction of elected Police and Crime Commissioners from November 2012, who, among other powers and responsibilities, will make all decisions

concerning community safety funding within York and North Yorkshire. The new Police & Crime Commissioner, Julia Mulligan, has been engaging with Safer Ryedale as part of her review of Community Safety structures in North Yorkshire and the City of York and she continues to meet with key partnership staff, elected members and attend public meetings across the district.

We will continue to work with our partner agencies to address your community safety priorities with actions being delivered through our four delivery groups of Crime in the Community, Alcohol Harm Reduction, Domestic Abuse and Safer Roads. Our structure allows us to respond to emerging needs and trends using an intelligence led approach to prioritise the allocation and deployment of joint resources.

In determining our priorities and actions, we will always listen to our communities through direct engagement, face to face surveys, Community and Police Group forums, Neighbourhood Watch liaison and of course our district, town and parish councils.

In 2010/11 we launched a new three year Plan for the Safer Ryedale Partnership (2011–14). This Plan reviews the second year of that plan (2012-13) and looks ahead to the coming year (2013-14). Finally, this years plan also takes account the new Police and Crime Plan 2013-17 launched by our newly elected Police and Crime Commissioner Julia Mulligan.

If you would like to find out more about our work and how we are contributing towards a safer Ryedale, please see our website at www.ryesafe.org.



Inspector Andy Everitt



Ryedale District

Situated between York and the Heritage Coastline of North Yorkshire, Ryedale is a rural area containing several small market towns, numerous villages and isolated dwellings. Ryedale covers 150,659 hectares (575 square miles) and is the largest district in North Yorkshire. The main route through the district is the A64 York to Scarborough road. In addition the A170 runs from Scarborough to Thirsk via Pickering and Helmsley and the A169 connects Malton and Whitby.

The district has a population of 51,700 living in 24,743 households and with 0.34 persons per hectare is ranked as having the 2nd lowest population density of all 326 local authorities in England. Generally Ryedale has an older population with a greater proportion of people aged over 60 years (31.7% including 2.9% over 85) than the English average (24.2% and 2.1% respectively). It has a smaller proportion of people aged 16-29 years (13.2%) and 30-44 years (16.4%) than average in England (18.7% and 20.6% respectively).

People in Ryedale are also healthier and live in larger accommodation than the English average. Ryedale has one of the lowest crime rates in the country and much work is undertaken to maintain this level and to gain improvements.



What is the Partnership Plan?

Each Community Safety Partnership (CSP) has a statutory responsibility to produce a partnership plan, which identifies how we will tackle the short, medium and long term priorities associated with crime and disorder in the District.

In order to ensure that we identify the correct priorities we take into account feedback from our local communities, obtained from various surveys and public engagement activities.

We also refer to the Joint Strategic Intelligence Assessment (JSIA) prepared and updated annually by North Yorkshire County Council and North Yorkshire Police. This pulls together data and information from various partners, showing levels and patterns of crime, disorder and substance misuse, changes in those levels and analysis of why those changes have occurred, including a review of the previous year's performance.

The previous Partnership Plan was completed in March 2012, and the tables on p8 summarises the Partnership's performance in the last year. This plan covers the period from April 2013 to March 2014, and will be reviewed and updated next year, based on the data published in the Ryedale JSIA, and other locally identified priorities.

We aim to inform our communities of the priorities for 2013/14 and clearly detail what Safer Ryedale will deliver in order to keep Ryedale District one of the safest areas in the country.

The plan outlines how Safer Ryedale will engage and interact with local communities, giving local people a voice on what matters.

Safer Ryedale conducts street surveys annually. The most recent, in September 2012, involved 600 Ryedale residents completing questionnaires about issues in their neighbourhoods.

The results reveal that 95% of respondents feel that the crime level in Ryedale is low or fairly low compared with national crime levels and 98% feel that Ryedale is a safe place to live.

Speeding motorists and dog mess were the two main complaints with 55.7% and 42% of respondents saying this was an issue for them followed by 33.57% concerned about traffic parking. Residents continue to raise concerns regarding litter.

87.5% of residents think they are well informed by local Police and the District Council about what is being done to tackle issues of concern.



How Does the Safer Ryedale Partnership work?

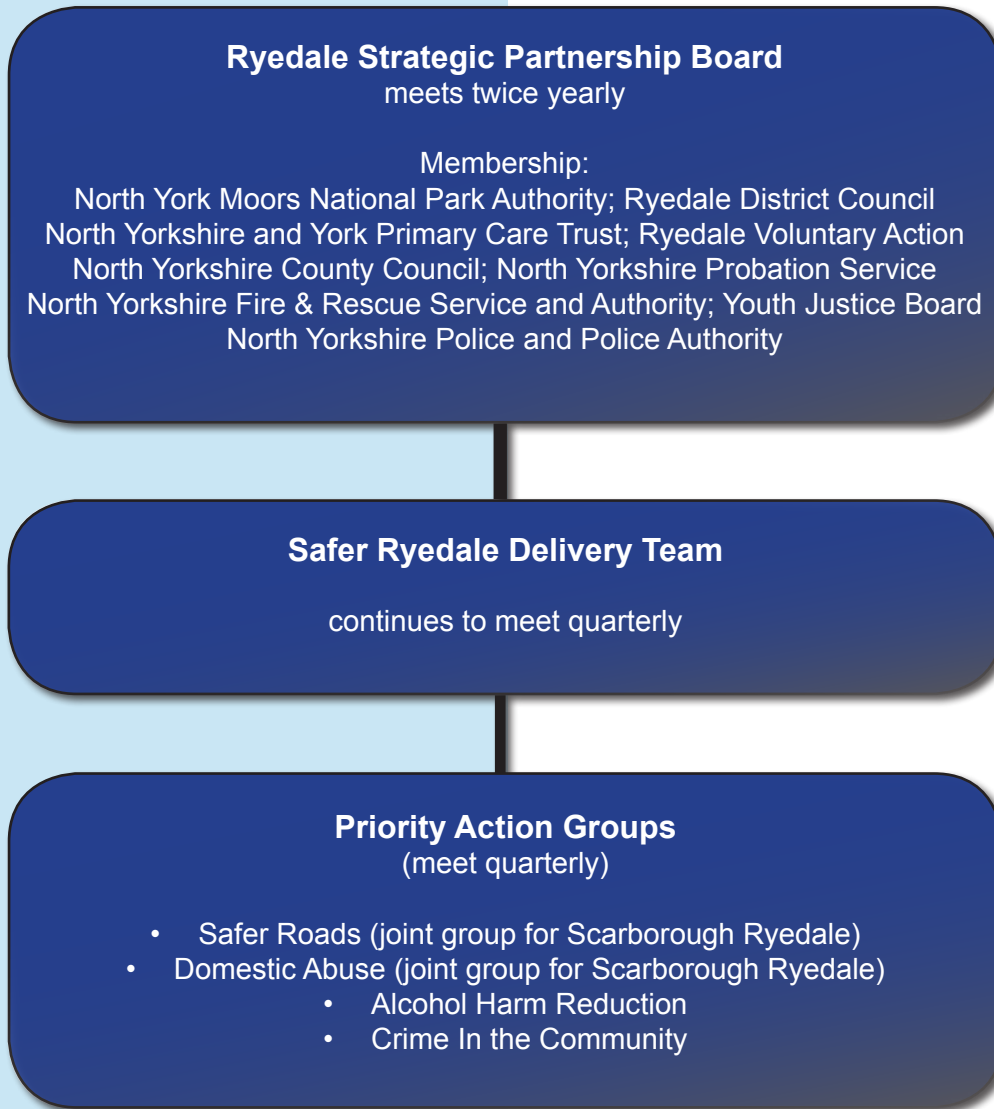
Safer Ryedale Community Safety Partnership

The Safer Ryedale Partnership brings together representatives from responsible authorities, who under Section 17 of the Crime and Disorder Act 1998 have a duty to exercise their functions with due regard to the need to prevent crime and disorder in their area.

The Partnership is required to determine its priorities for action, taking into account the views of those who live and work in the area, and to produce a Partnership Plan which sets out the actions it will take to address the identified priorities.

Since April 2010, the Board of Safer Ryedale has been amalgamated with the Ryedale Strategic Partnership Board, which will, in future meet twice a year. The Delivery Team and Priority Action groups have remained separate from the Ryedale Strategic Partnership; two of the Priority Action groups are now run jointly with the Safer Communities Scarborough Partnership.

The diagram opposite illustrates this relationship:



How Does the Safer Ryedale Partnership work?

The Partnership was supported in 2012-13 by two members of staff; the Community Partnerships Officer and the Crime and Disorder Officer who both work closely with NY Police's Ryedale Safer Neighbourhood Team and other partners, benefiting from many years of excellent working relationships.

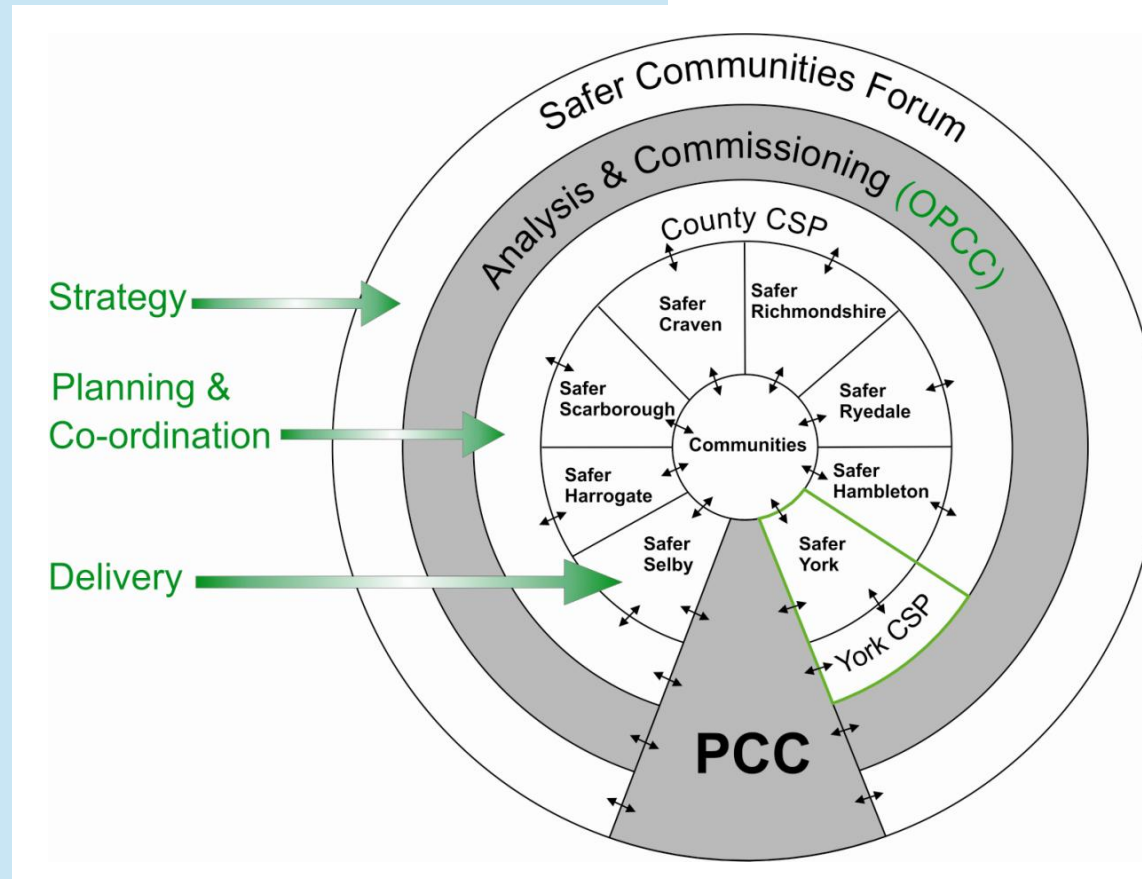
The York and North Yorkshire Community Safety Forum is Chaired by the Police and Crime Commissioner Julia Mulligan. This is attended by the Chair of the Safer Ryedale Delivery Team.

The Wider Partnership Framework

Local Government York & North Yorkshire, and the Chief Executives group will continue to meet in 2013/14, and the York and North Yorkshire Community Safety Forum will report to them. This is attended by the Chair of Safer Ryedale Delivery Team, and the Forum will continue to work with the new Police and Crime Commissioner.

At a local level, the Safer Ryedale Partnership works to implement the Partnership Plan, which helps to deliver the priorities agreed by the Partnership. We are also committed to working at sub-regional level with other Community Safety Partnerships, through the York and North Yorkshire Safer Communities Forum, to gain economies of scale in tackling issues common to us all.

The diagram opposite shows North Yorkshire and York delivery structure.



Top photograph -
Julia Mulligan - Police & Crime Commissioner



Review of Partnership Plan 2012 - 13

The table below shows the Partnership's crime and anti social behaviour performance in the two years of the Partnership Plan:

Safer Ryedale Overall Performance Against Performance Plan 2011-14: Table 1

Indicator	2010/11 Baseline	Target % Reduction to 31st March 2014	2011/12 Total	2012/13 Total	% Difference Achieved by 31st March 2013 (2 Years)
Shop Theft	76	3% per year over 3 years	73	73	- 4%
Theft from unattended vehicles	126	3% per year over 3 years	96	98	- 23%
Violence	401	3% per year over 3 years	321	298	- 23%
Hate Crime	3	3% per year over 3 years	7	5	* statistically small numbers
Burglary of a Non Dwelling	152	3% per year over 3 years	145	175	+ 5%
Domestic Burglary	60	3% per year over 3 years	55	47	- 15%
Criminal Damage	352	3% per year over 3 years	318	221	- 23.5%
ASB	1923	3% per year over 3 years	1678	1327	- 22%



Review of Partnership Plan 2012 - 13

In 2012-13, each of our Action Priorities supported the following projects and initiatives:

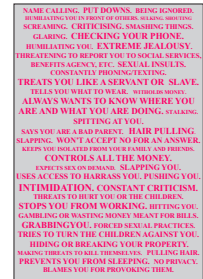
Domestic Abuse

- MARAC's (Multi Agency Risk Assessment Conference) – a meeting where agencies share information about the risk of harm or homicide regarding people experiencing domestic abuse. Multi-agency action plans are developed to support those at most risk. The aim is to increase the safety and well-being of the adults and children involved and reduce the likelihood of repeat victimisation.
- Making Safe Scheme which includes support to victims, security aids, emergency accommodation for perpetrators to remove them from the home and therefore reduce risk to the victim, work to challenge the behaviour of perpetrators, floating support also offered to perpetrator if couple wish to stay together and reduce the risk of future victims, safety planning work with children.
- Specialist domestic violence courts where court staff and magistrates have an increased awareness of the issues relating to domestic abuse. Foundation workers and IDVA also in attendance to offer support to both the

victim and perpetrator.

- Awareness raising activities aimed at increasing the number of victims reporting domestic abuse.
- Group work programme for victims to help them break the cycle of domestic abuse.
- Delivering education to children and young people in schools to promote non-violent interpersonal relationships.
- Improved support available to children and young people affected by domestic abuse through work in early years, schools and non school settings.
- Safer Ryedale delivered a Hidden Crime Event in December. This was attended by 60 people, 30 from the community, predominantly Women's Institute and 30 Officers from North Yorkshire Police, Ryedale District Council and North Yorkshire County Council; this is the first time we have done a joint training/awareness event for the public and officers. Guest speakers included Sara Swann, MBE (Leading expert in the field of Child Sexual Exploitation). Ryedale now has two train the trainer professionals in the Ryedale area.

Measure	Target 09/10	Actual 09/10	Target 10/11	Actual 10/11	Target 11/12	Target 12/13
Repeat incidents of domestic abuse	33.75%	25.6%	32%	31.32%	25.5%	25.5%



Review of Partnership Plan 2012 - 13

Alcohol Harm Reduction

- Ensuring links between violent crime and nominations to the Integrated Offender Management Scheme (aimed at providing intensive support).
- Extending alcohol treatment linked to Integrated Offender Management to include offenders on short prison sentences, on anti social behaviour orders and perpetrators of domestic abuse not sentenced through the courts.
- Trading Standards are continuing to carry out regular visits to selected licensed premises to check use of refusal registers and that the 'No ID No Sale' regulations are adhered to. Street Scene continued to liaise with North Yorkshire Police informing them of hot spot areas and any drug and alcohol litter finds.
- Working with A & E to identify where people have had their last drink, profiles of drinking behaviour and brief intervention.
- Continuing good links between Housing Officers and Safer Ryedale with joint tenant and problem solving meetings.
- Maintaining a Designated Public Places Order which gives police powers of arrest if people are drinking alcohol anti-socially in the area and refuse to hand it over when requested.
- Using anti-social behaviour enforcement tools to tackle alcohol related disorder.

- Continuation of Pubwatch Groups in Malton/Norton and Pickering. Quarterly meetings are taking place unless additional meetings are needed to discuss individuals to be banned.
- Proxy Purchasing - If an individual is caught purchasing alcohol for underage drinkers (proxy sales), on licensed premises, they are automatically banned from the pubs in Ryedale. If they are caught with alcohol purchased in an off licence, i.e. a supermarket, with intent to supply it for consumption by underage persons, they are given the choice of an on the spot fine, or being charged and summoned to court.

Crime In the Community 2012-13

- Safer Ryedale continues to work closely with Trading Standards, we currently have 56 No Cold Calling Zones.
- The Ryedale farming community and NYP are carrying out joint patrols to catch and deter poachers and those looking to commit offences such as burglary other. Country Watch members and NYP will have a zero tolerance approach to poaching and hunting with dogs.



Review of Partnership Plan 2012 - 13

- NYP are continuing to focus on metal theft, including diesel theft and agricultural machinery. Operation Chairman focussed on travelling criminals from around the region known to commit offences including metal theft in Ryedale. Additional resources and technical equipment are being utilised to detect offenders. The development of good intelligence and affective use of watch schemes have been the key to success.
- Taxi Watch – the scheme has been launched and will focus on protecting vulnerable people, boost protection for drivers and assist in the crackdown on crime and anti social behaviour. The scheme aims to increase confidence and engagement between the police, partners, taxi drivers and operators initially in Malton and Norton. Drivers will be able to alert the police should they feel threatened at any time whilst working.
- Dog Fouling - Following consultation with local people, Safer Ryedale have been working in partnership to tackle dog fouling - one of the main complaints highlighted by the Ryedale community. Patrols will continue to be stepped up in hotspot areas and £50 fines will be issued to irresponsible dog owners. During high visibility patrols by North Yorkshire Police and Ryedale District Council Enforcement Officers, responsible owners have been rewarded with a 'Caught Doing Right' card that was used to enter a free prize draw.
- County wide MAPS, is a monthly multi-agency problem solving meeting that brings agencies together under the umbrella of 'protecting vulnerable communities'. Vulnerable communities are described as repeat victims, older persons, young people, children, rurally

isolated persons, individuals/families involved in ASB, identified hot spot locations and community tensions.

- MAPS groups in schools
In furtherance of the **'Prevent and Deter' strand of the Prolific and Priority Offenders Strategy**, regular (approx 6 weekly) MAPS meetings are held at each of the 4 Secondary Schools in Ryedale, and two of the Primary schools.
- At these meetings young persons who are coming adversely to the attention of school staff and who are considered likely to fall into ASB or minor crime are considered, and appropriate solutions discussed. These may range from informal discussion with the young person and his/her parents to the agreement of conditions to form an Acceptable Behaviour Contract with the young person.
- It has frequently been the experience of the MAPS Group that when parents are contacted they too are having problems with their young person which mirror the negative behaviour being displayed at school. Parents are often pleased and relieved to have multi-agency support at a time that is often crucial to their child's development as a useful member of society.



Review of Partnership Plan 2012 - 13

Safer Roads

- Targeted road safety education in primary and secondary schools.
- ‘Drive Alive’ multi-agency pre driver event delivered in priority secondary schools co-ordinated by North Yorkshire County Council Road Safety Team.
- ‘Drive Wise’ multi-agency event aimed at newly-qualified drivers. Delivered to young offenders, apprentices and young farmers.
- Multi-agency events focussing on seatbelt use and mobile phone use in areas identified by monitoring surveys. Engaging with local communities, businesses and schools to achieve greater compliance rates.
- Targeted seatbelt and mobile phone enforcement in areas identified from surveys.
- Seasonal campaigns working closely with the 95 Alive

York and North Yorkshire Road Safety Partnership, to reduce drink and drug driving, speeding and increased seatbelt use.

- Working with the 95 Alive partnership and the motorcycle community to raise awareness and reduce deaths and serious injuries on the roads in Ryedale and Scarborough. Promotion of the NYRides website.
- ‘Bikeability’ cycle training scheme, delivered and co-ordinated by North Yorkshire County Council’s Road Safety Team.
- Public engagement events – working with various road user groups such as motorcyclists, older drivers and general public events and shows.
- Supporting various 95 Alive media campaigns on Facebook, Twitter and Youtube.



Overview and Scrutiny Process

The Crime and Disorder (Overview and Scrutiny) Regulations 2009 came into force on 30 April 2009. In conjunction with Section 19 of the 2006 Act, they set out the requirements for discharging Crime and Disorder Overview and Scrutiny arrangements.

All Districts have Crime and Disorder Overview and Scrutiny Committees which undertake the statutory role “to review or scrutinise decisions made or other action taken, in connection with the discharge by the responsible authorities of their crime and disorder functions”. In Ryedale, the Overview and Scrutiny Committee adopted this role.

The Overview and Scrutiny Committee (Crime & Disorder) considers the final partnership plan annually following its agreement by the Safer Partnership Board.



Our Priorities for 2013 - 14

The Ryedale JSIA 2012, published in December last year, noted (in the Executive Summary)

“Ryedale District has been, and remains, an area of low crime and anti-social behaviour. Both are experiencing downward trends with reductions of 9% and 25% respectively when comparing 2012/13 to 2011/12. The district has the lowest crime rate of all districts within North Yorkshire and is currently in 1st position within the Most Similar CSP group nationally.” It is also experiencing some of the largest reductions. This results in a local community satisfied with Police and partner activity. All crime types have decreased except for fraud and vehicle crime, although the numbers involved are low.

The rural nature of the area results in a crime and ASB distribution that is concentrated mostly within the market towns. The rural areas do however experience a vulnerability from travelling offenders from the neighbouring counties and from the north-east of England which is evident by sporadic targeting of these areas for different types of property crime including burglary, theft and vehicle crime. Poverty and social isolation are also affecting most areas within the district.

The main under-pinning factors for crime and ASB within Ryedale are alcohol,

travelling offenders, resident families and individuals known to a variety of agencies. Matters of concern to local communities consist mostly of those which are visible or impact them directly including rural crime and poaching, ASB and damage linked to underage drinking.

The changing landscape of Community Safety in light of the austerity measures and the election of a Police and Crime Commissioner will provide further challenges, opportunities and uncertainties, as will the increased involvement of technology in everyday, and criminal, activity.

The North Yorkshire Police Control Strategy and Intelligence Requirement remain relevant to Ryedale District and responses across the statutory partners should be co-ordinated by the Community Safety Partnership. The issues of particular relevance to the district are outlined below.

Quality of Life

- Standards of service to all victims
- Priority wards
- Repeat victimisation and crime/ASB hotspots
- Identifying and responding to local community concerns

Serious Acquisitive Crime

- Burglary and Vehicle Crime

- Property marking

Protecting Vulnerable People

- Road Safety (a CSP core activity)
- Embedding the Vulnerability Risk Assessment process
- Domestic Abuse (a CSP core activity)
- Children and Young People (Missing Persons / Child Sexual Exploitation)
- Adults (Rural isolation, crime)

Organised Crime Groups

- Cross border property crime

Domestic Extremism

- Prevent Strategy

At the Safer Ryedale Delivery Team meeting in January 2013 (following publication of the Ryedale JSIA 2011) the following priorities for 2013/14 were agreed:

- Domestic Abuse
- Safer Roads
- Crime In The Community
- Alcohol Harm Reduction

Each of the Priority Action groups has decided on appropriate actions to deliver its aims, again taking into account the need to focus resources and to add value where possible.

The Action Plan was approved by the Delivery Team in April 2013.



Our Priorities for 2013/14

Reducing Re-offending

Community Safety Partnerships are required to include reducing re-offending within the Partnership Plan. Probation is the lead agency within the Community Safety Partnership for reducing re-offending, however all responsible authorities within the CSPs have overall responsibility for developing their local Prolific Priority Offender strategy, and for establishing and managing a scheme that delivers this within national guidance. In York and North Yorkshire strategic oversight of the 'Deter' strand of the PPO strategy is assumed primarily at County level by the Safer Communities Forum.

As part of this role, CSP members are responsible for:

- Identifying and resolving resource and management issues
- Ensuring 'Deter' is appropriately linked with Integrated Offender Management (within which there is a distinct PPO cohort).
- Ensuring that an information sharing protocol is in place.
- Implementing and overseeing 'Deter' operations in their areas.
- Engaging relevant partners at a strategic level, e.g. Children's Trusts and Directors of Children's Services.
- Identifying need for, and developing capacity to provide, interventions.
- Monitoring outcomes.

At an operational level re-offending is addressed through Integrated Offender Management support, intervention and enforcement based on offender needs and presenting offending activity, Youth Deter panels, MAPPA, MARAC and Safeguarding processes.



Safer Ryedale Action Plan 2013/14

Performance measures, baselines and targets

Priority Performance Measures	Baseline	Target to 31st March 2014
Domestic Abuse		
NI 32 Repeat incidents of Domestic Violence	2009/10 - 22.2%	Target reduction by 1% per year to 31st March 2014
Safer Roads		
Safer Roads NI47 Killed or Seriously Injured in Road Traffic Collisions	2010 - 66 Figures taken from NYCC RTA document written by Paul Dea	Target reduction 1% per year to 31st March 2014
Crime in the Community		
Shop Theft	2010/11 - 76	Target reduction 3% per year to 31st March 2014
Theft from unattended vehicles	2010/11 - 126	Target reduction 3% per year to 31st March 2014
Violence	2010/11 - 401	Target reduction 3% per year to 31st March 2014
Hate Crime	2010/11 - 3	Target reduction 3% per year to 31st March 2014
Burglary of a Non Dwelling	2010/11 - 152	Target reduction 3% per year to 31st March 2014
Domestic Burglary	2010/11 - 60	Target reduction 3% per year to 31st March 2014
Alcohol Harm Reduction		
Violence	2010/11 - 401	Target reduction 3% per year to 31st March 2014
Criminal Damage	2010/11 - 352	Target reduction 3% per year to 31st March 2014
ASB	2010/11 - 1923	Target reduction 3% per year to 31st March 2014



Safer Ryedale Funding and Resources

Attracting funding for Community Safety has always been a challenge in areas like Ryedale that are low in crime; however as a result of spending constraints made necessary by the state of the national economy, Safer Ryedale's funding from central government (via the Police and Crime Commissioner North Yorkshire) will reduce further in 2013/14.

Last financial year, the allocation made to Safer Ryedale from central government (via NYCC), was £15,122 with a contribution of £5,323, from the NY Police Authority. With a carry over of £5,052 the Partnership had a total budget of £45,018 for 2012/13.

The Police and Crime Commissioner for North Yorkshire has made an allocation of £20,445 to the Safer Ryedale Partnership to deliver the Partnership Plan 2013/14.

Safer Ryedale will continue to explore opportunities for attracting external funding to complement local delivery and will work to ensure that Ryedale benefits from the county-wide projects.

The Safer Ryedale Delivery Team will continue to work with partners to utilise both financial and human (staff and volunteer) resources to develop and deliver activities to address the priorities. These will be monitored on a quarterly basis and progress reported on the website www.ryesafe.org



Community Engagement

Engaging the community is a core function of the Partnership. Without understanding the needs of the local community, priorities would be lost and actions would lack focus. The Partnership will develop and enhance approaches that will allow communities to identify their priorities and have a voice to ensure issues affecting their lives are dealt with and where appropriate, agencies, officers and elected members are held to account.

Safer Ryedale have an excellent relationship with our community. Results revealed that 95% of people felt that the crime level in Ryedale was low or fairly low compared to national crime levels, 98% felt that Ryedale was a safe place to live. 87.5% of residents surveyed think they are well informed by local Police and the District Council about what is being done to tackle issues.

A variety of approaches are used to engage with communities, including those that are harder to reach. These include:

- Website www.ryesafe.org.
- Media opportunities – we have a target of twelve press releases a year, which we exceed.
- Community & Police (CAP) meetings held in 5 areas of the district, three times a year.
- Parish Liaison Forum.
- Voluntary Sector Forums (Ryedale Together and the VCS Forum).
- Annual street surveys in Ryedale’s market towns.
- The ‘Rural Voice’ project, co-ordinated by Ryedale Voluntary Action, will also contribute to the involvement of the voluntary sector in Safer Ryedale’s processes.
- We have an effective and valued network of Watch Groups – 1022 in total, made up of:

NHW	336	Business Watch	12
Gold Watch	12	Horse Watch	59
Post Office Watch	11	Pub Watch	85
Rural Watch	403	School Watch	22
Shop Watch	78	Taxi Watch	4

Many of Ryedale’s parishes have written a parish plan and these are another source of information regarding the public’s concerns about community safety.

Community engagement is a legal requirement for the Partnership but we want to ensure it is a positive and worthwhile experience.

During 2013/14 Partnership resources will be allocated to community engagement activities. We are committed to raising awareness, promoting safer communities and offering preventative advice on a variety of issues affecting our communities.



Safer Ryedale - The Future

Over the next 12 months we will be preparing for further significant changes in community safety following the election of the Police & Crime Commissioner in November 2012 and subsequent Police and Crime Plan 2013-2017.

The content of the Police and Crime Plan is informed by evidence around effect crime reduction. The strategy, deliverables and outcomes stem from a set of six goals.

Vision

“Be safe, feel safe – protected by the most responsive service in England” *Julia Mulligan, Police and Crime Commissioner, North Yorkshire*

Goals

In order to retain our top spot as the safest area in England by being the most responsive service in England, we need to:

1. Reduce harm - through effectively responding to crime, anti-social behaviour, vulnerable people, road casualties and identifying and tackling with partners the most important drivers of crime in our communities
2. Put people first - ensure a first-rate response, active reassurance, high visibility and improved victim support. We need to become a people- rather than process-driven force through simplifying policies and procedures and changing behaviours, including complaint handling
3. Deliver more with less – achieve maximum value for money across the organisation with resources prioritised towards frontline policing in both urban and rural

areas. We will drive value for money and efficiencies via collaboration, effective procurement and reducing long term costs through increasing crime prevention measures and driving value in back and middle office functions

4. Ensure that we are ‘fit for the future’ - by anticipating future needs and responding with modern buildings, training, recruitment and IT investment plus driving energy efficiency. This will include a new, flexible solution for force headquarters
5. Drive Justice - respond to the public’s demand for justice through dealing more effectively with prolific offenders; ensuring the appropriate use of cautions; meticulously preparing cases for charging; embedding restorative justice and working with the Crime Prosecution Service to ensure North Yorkshire’s specific needs are understood and met.
6. Police UK - we are duty bound to play an active role in strategic national policing requirements and doing all we can to ensure a fair deal for our area. This means fighting our corner for funding and being ready to provide support when national needs demand

Safer Ryedale will continue to work with all our partners within the district and force-wide to adapt to changes as they arise, in order to continue delivering the community safety solutions our communities expect.



Partnership Action Plan 2013/14

Domestic Abuse	
Aim:	To protect and support people experiencing domestic abuse in Scarborough, Whitby and Ryedale
Objective 1:	To reduce repeat MARAC'S
Objective 2:	To deliver awareness raising and education initiatives
Actions	Continue to develop the availability of voluntary perpetrator programmes and monitor their effectiveness Deliver Domestic Abuse awareness training to victims across Scarborough & Ryedale. Train the Trainer Sessions now delivered to 2 Champions within the Ryedale area who will deliver training within their own organisations
Objective 3:	Develop and maintain Multi-Agency Partnership Working
Actions	Increase representation to the existing DAF membership for the hard to reach groups including BME, travellers, gay, bi sexual and Transgender groups Increase representation to the existing DAF membership for the services and agencies working with people with mental health issues
Objective 4:	Develop and maintain services for children and young persons
Actions:	Support the continuation of the delivery and availability of the Specialist Children's Therapeutic Worker at Domestic Abuse Services to children and young people Continue to deliver Domestic Abuse education packages into schools
Objective 5:	Improve availability of appropriate accommodation for victims of abuse
Actions:	Provision of Refuge accommodation
Objective 6:	Making Safe Service Review
Actions:	Continued awareness around MS & referral to Perpetrator Scheme from custody Transition of perpetrators to independent living Develop links with health & social services
Objective 7:	Ensure the Scarborough, Whitby and Ryedale Action Plan relates to the DA County Wide Action Plan



www.ryesafe.org

Partnership Action Plan 2013/14

Safer Roads	
Aim:	To minimise the levels of Killed and Seriously Injured on the roads of Ryedale
Actions:	Motorcycle Campaign:-
	<ul style="list-style-type: none"> • Awareness raising events at Emergency Service Days and Ryedale Show • Cross County initiatives (Cleveland, West Yorkshire) • Internet Campaigns (Think Website) • Enforcement on key routes ie A170
Actions:	Older Drivers (Cars) Campaign:-
	<ul style="list-style-type: none"> • Older drivers events, consult Age Uk and Ryedale Older Persons Forum • Possible use of volunteer Advanced Driving Instructors • Seasonal events including reaction tests, eye tests and ADI assessments • Arrive Alive Classic presentations
Actions:	Young Road User Campaign:-
	<ul style="list-style-type: none"> • Drive Alive NYCC countywide Drive Alive within schools identified as a priority. Once this priority list is confirmed the schools in both districts requiring local targeting will be clearer. (Potential also for Young Farmers group, Cadets and Atmosphere and alternative education packages) • Education young school children “Learn & Live” • Daniel DVD for parents of young drivers • Develop Campaign Ride Aware for 2 wheel road users • Possible campaign YouTube Video Clips, DVD, Drive Wise, Think Campaign, Tales of the Road. Use NYCC 4Youth face book page Deployment of Data Loggers and use of the 4 Matrix Signs:- Continual deployment of the data loggers and signs where a need is identified.
Actions:	Operation Siren Multi Agency Campaigns:-
	The events focussing on seatbelts and mobile phone use will continue within Scarborough and Ryedale (Priority areas identified through the data loggers and also around schools), the Safer Neighbourhood Teams will continue to support where possible.
Actions:	Laser Speed Enforcement & FPN



Partnership Action Plan 2013/14

Community Priorities

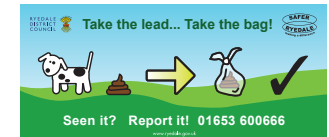
Aim:	To minimise the effects of crime and anti social behaviour on the communities within Ryedale thereby contributing to a positive view of the District.
Objective 1:	To reduce theft and violence by 10% 2011-2014
Actions:	Continue Nominated Neighbour, Sheduction and Seasonal Crime Reduction Initiatives eg Expand and publicise No Cold Calling Zones
	Continue to promote Watch Schemes
	To increase the use of the Restorative Justice Scheme and report to Delivery Team on progress
	Promote Operation Tornado to decrease the number of metal thefts. Carry out regular multi-agency checks by all agencies
	To promote Pub Watch within Ryedale and identify what actions can be taken to prevent offences in the Ryedale night time economy
Objective 2:	Improve perceptions of anti-social behaviour and reduce fear of crime by publishing and responding to public priorities highlighted by the community consultation survey
Actions:	To review Wentworth Street Car Park and identify actions
	Maintain an ongoing consultation process on perception of anti-social behaviour by utilising the Safer Ryedale website and twice yearly street surveys to be carried out in September 2012
	Make full use of media and other publicity vehicles to reduce crime and fear of crime
Objective 3:	To target young offenders, vulnerable people and those at risk of offending through support, education and diversionary activities to reduce incidents of repeat offending
Actions:	Maintain baseline data of young offenders and others on ASBO, ABC and MAPS Groups
	Work with the Police to assess complaints of anti-social behaviour, address through problem solving and deliver interventions
	Ensure continuance of the MAPS Groups by close liaison with four secondary schools and attendance at all meetings
	To increase the number of referrals to Youth Support Service through the re-adoption of YACAB referrals



Partnership Action Plan 2013/14

Alcohol Harm Reduction

Aim:	To deliver the contents of the previous Alcohol Harm Reduction Strategy and develop the new strategy for the Ryedale District.
Objective 1:	To continue to raise awareness on the consequences to individual's health and community welfare
Actions:	Review the Alcohol Harm Reduction Strategy and align with the County Strategy
	Carry out a Mini ARC Campaign in Malton
	Link with the Cambridge Centre and other relevant agencies and A&E Manager to feedback data to the Steering Group
	Link in with the schools survey in order to identify the need for further intervention
	Explore opportunities to raise local awareness and link with the Cambridge Centre/NYP
Objective 2:	To reduce the number of repeat offenders linked to alcohol related offences
Actions:	Maintain links to the Ryedale Women's Hub in order to assess its impact on re-offending
	To determine how the steering group can make the best use of the data available
	To increase the amount of Alternative Disposals with regard to alcohol related offences
	To establish links to the After Math Project
Objective 3:	To reduce the level of alcohol related crime and disorder offences
Actions:	Continue to identify, monitor and actively patrol those public places where young people gather to drink, Youth Support Service and NYP to share information.
	Continue the media programme for the district, promoting links to national campaigns/initiatives and obtain merchandise from Drink Aware
	NYP to distribute AA/Cambridge Centre literature when attending incidents where offenders and/or victims are perceived to have issues relating to alcohol.
	Targeted outreach work in Pickering/Malton/Norton with referrals to the Youth Support Service.
	Targeted patrols around underage drinking inside licensed premises
	NYP and Cambridge Centre to share information on arrests involving alcohol. Followed up with targeted action or letter.
	Offer an incentive of a shorter ban to people barred from licensed premises by Pubwatch (ie brief intervention with Cambridge Centre). Also link with AA and NA
	Partnership to support a rejuvenated Pubwatch Scheme in Malton/Norton that includes agreed standards of behaviour and unacceptable conduct by customers. Carry out early intervention through police patrols, CCTV, apex radios and increased communication with door staff. Identify those groups and individuals who may cause problems at an early stage and make positive interventions to prevent incidents occurring. Support a 'banned from one banned from all' approach. Licensees, door-staff and partner agencies to take collective responsibility in promoting a safe night time economy by working more closely together.



Partnership Action Plan 2013/14

Community Development

Aim:	To encourage community participation to inform Safer Ryedale's work
Objective 1:	To develop opportunities to involve the community in raising concerns, setting priorities and to receive information on Safer Ryedale's Work
Actions:	Update the Safer Ryedale website
	Gather community concerns and feedback via website questionnaire ie street survey
	Provide a Safer Ryedale update at Community and Police meetings
	Monitor numbers of Neighbourhood Watch Co-ordinators



ABC	Acceptable Behaviour Contract
AHRG	Alcohol Harm Reduction Group
ASBO	Anti Social Behaviour Order
ATC	Auto Traffic Counter
CAF	Common Assessment Framework
CAP	Community and Police liaison meetings
C&DO	Crime and Disorder Officer (RDC)
CPM	Community Partnerships Manager (RDC)
CPO	Community Partnerships Officer (RDC)
CSCM	Community Safety Crew Manager (NY Fire & Rescue)
CSP	Community Safety Partnership
CSS	Community Safety Sergeant (NY Police)
CYP	Children and Young People's working group
DAS	Domestic Abuse Services
DV	Domestic Violence
MAPS	Multi-agency Problem Solving group
MARACs	Multi-agency Risk Assessment Conferences
Missdorothy.com/Miss Dot	Computer software used in primary schools to raise children's awareness of risky and/or unacceptable behaviour (their own or other people's)
NCCZ	No Cold Calling Zone
NHW	Neighbourhood Watch
PCC	Police and Crime Commissioner
PCSO	Police Community Safety Officer
PPO	Prolific and other Priority Offenders
RTC	Road Traffic Collision
SNT	Safer Neighbourhood Team (NY Police)
Tier 3 Services	Drug and alcohol abuse intervention – requires referral
Watch Over Me	As Missdorothy.com above, for secondary schools



Safer Ryedale wishes to thank the following organisations and their staff for all their help, support and involvement in the production of the Joint Strategic Intelligence Assessment and the Partnership Plan

North Yorkshire Police

North Yorkshire Fire & Rescue

North Yorkshire County Council

Ryedale District Council

District based Community Safety Partnerships in North Yorkshire, and Safer York



Safer Ryedale Community Safety Partnership
Ryedale District Council
Ryedale House
Old Malton Road
Malton
YO17 7HH

Tel: 01653 600 666
email: communitysafety@ryedale.gov.uk
www.ryesafe.org.uk



www.ryesafe.org

Contact Numbers and Web Sites

Safer Ryedale 01653 600666
www.ryesafe.org

Ryedale District Council 01653 600666
www.ryedale.gov.uk

North Yorkshire Fire & Rescue Service 01609 780 150
www.northyorksfire.gov.uk

North Yorkshire Police 101
www.northyorkshire.police.uk

Police & Crime Commissioner for North Yorkshire
01765 641 839
www.northyorkshire-pcc.gov.uk

North Yorkshire County Council 0845 872 7374
www.northyorks.gov.uk

North York Moors National Park 01439 770 657
www.visitnorthyorkmoors.org.uk

North Yorkshire & York Primary Care Trust 01423 815150
www.nyypct.nhs.uk

North Yorkshire Probation Service 01609 778644
www.nyprobation.org.uk

North Yorkshire Youth Justice Service 0845 300 5430
www.ny-yjs.org.uk

Domestic Abuse Helpline 0808 200 0247

Crimestoppers 0800 555 111

North Yorkshire Trading Standards Doorstep Crime Hotline 0845 330 3313

95 Alive
www.roadwise.co.uk

